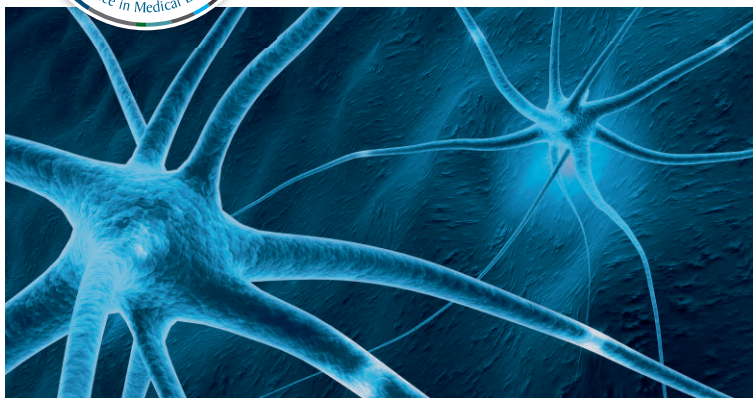




## Residential course on rehabilitation in multiple sclerosis

6-7 October 2016  **KLINIKEN VALENS**  
Valens, Switzerland



# Residential course on rehabilitation in multiple sclerosis

## Overview

This residential course is designed for neurologists, physiotherapists and psychiatrists willing to learn about the most advanced neurorehabilitation techniques in multiple sclerosis (MS). Participants will learn about the metrics for the assessment of functioning in MS in order to plan a personalised and goal oriented rehabilitation programme. The second part of the course will address the evidence based therapeutic interventions for motor, cognitive and social rehabilitation. The residential programme will be held in the Klinik Valens which is a leading international academic training centre equipped with all the forefront technologies including a thermal swimming pool. Participants will have the unique opportunity to join the team of highly trained specialists in their everyday activities for practical training sessions.

## Learning objectives

By attending this live educational course, participants will be able to:

- Illustrate the biological basis of neurorehabilitation
- Describe the main metrics for the assessment of motor disability in MS
- Plan personalized rehabilitation programmes

## Target audience

Neurologists, psychiatrists, rehabilitation therapists currently involved in MS rehabilitation management.

## Chair

### **Jürg Kesselring**

Department of Neurorehabilitation  
Rehabilitation Centre  
Valens, Switzerland

## Co-Chair

### **Peter Feys**

Rehabilitation Sciences and Physiotherapy  
University of Hasselt  
Campus Diepenbeek  
Agoralaan  
Diepenbeek, Belgium

EXCEMED designed this programme in partnership with Valens Klinik.

 **KLINIKEN VALENS**

Endorsed by RIMS

RIMS "Rehabilitation in Multiple Sclerosis" is an international non-profit organization that was founded in 1991. It is an European network for best practice and research, bringing together health care professionals, researchers and MS societies.



## CME Provider

EXCEMED is a non profit foundation dedicated, since the last four decades, to the development of high-quality medical education programme all over the world.

EXCEMED adheres to the guidelines and standards of the European Accreditation Council for Continuing Medical Education (EACCME®) which states that continuing medical education must be balanced, independent, objective, and scientifically rigorous.

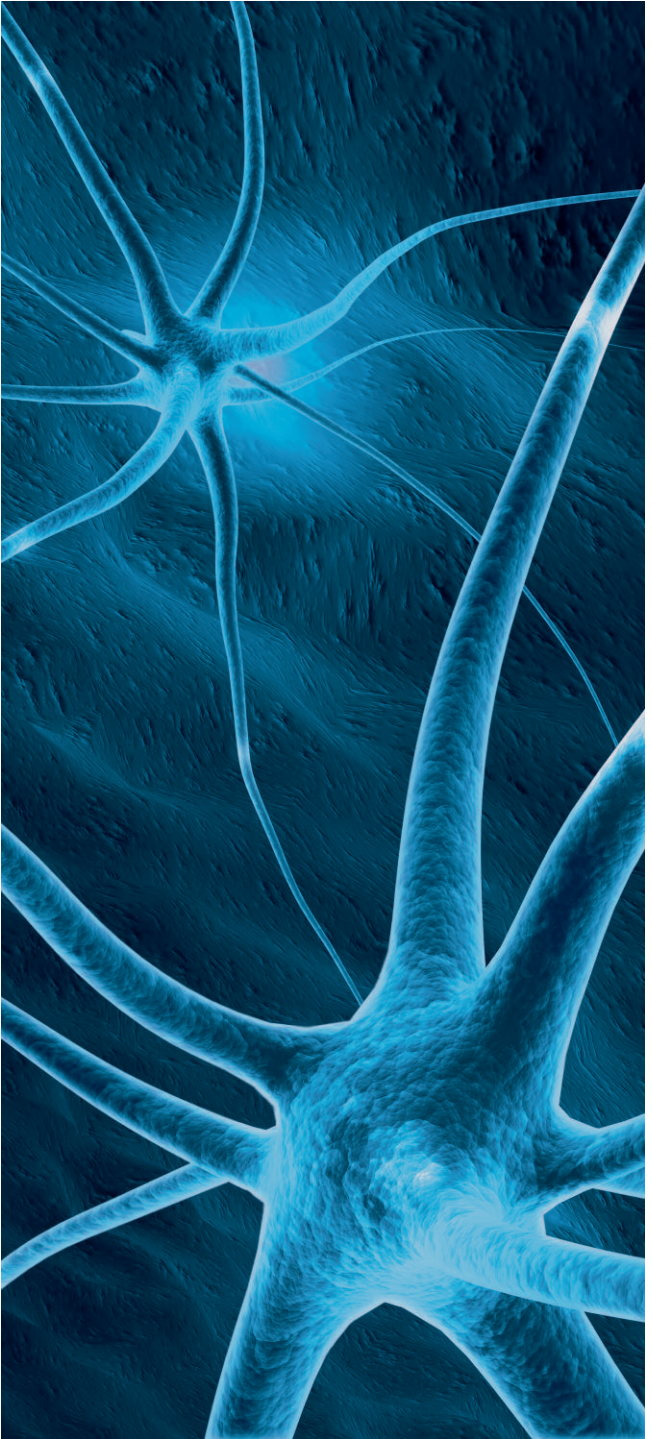


## Continuing medical education

An application will be made to the EACCME® for CME accreditation of the EXCEMED **“Residential course on rehabilitation in multiple sclerosis”** to be held on 6-7 October 2016 in Valens, Switzerland.

EXCEMED adheres to the principles of the Good CME Practice group (gCMEp).





Faculty

# Faculty

## **Sylvan Albert**

Department of Neurorehabilitation  
Valens Clinic Rehabilitation Center  
Valens, Switzerland

## **Rixt Althof**

Department of Therapy  
Valens Clinic Rehabilitation Center  
Valens, Switzerland

## **Maria Pia Amato**

Department of Neurological and Psychiatric Sciences  
University of Florence  
Florence, Italy

## **Antonella Artuso**

Don Gnocchi Foundation  
Milan, Italy

## **Jens Bansi**

Department of Therapy  
Valens Clinic Rehabilitation Center  
Valens, Switzerland

## **Giancarlo Comi**

Department of Neurology  
Institute of Experimental Neurology  
Vita-Salute San Raffaele University  
Milan, Italy

## **Juliane Ebert**

Department of Neurorehabilitation  
Valens Clinic Rehabilitation Center  
Valens, Switzerland

  
**Peter Feys**

Rehabilitation Sciences and Physiotherapy  
University of Hasselt  
Campus Diepenbeek  
Agoralaan  
Diepenbeek, Belgium

**Urs N. Gamper**

Department of Therapy  
Valens Clinic Rehabilitation Center  
Valens, Switzerland

**Päivi Hämäläinen**

Masku Neurological Rehabilitation Centre  
Masku, Finland

**Jürg Kesselring**

Department of Neurorehabilitation  
Valens Clinic Rehabilitation Center  
Valens, Switzerland

**Verena Kesselring**

Department of Neurorehabilitation  
Valens Clinic Rehabilitation Center  
Valens, Switzerland

**Dawn Langdon**

Department of Psychology  
Royal Holloway University of London  
London, UK

**Christine Meier**

Department of Neurorehabilitation  
Valens Clinic Rehabilitation Center  
Valens, Switzerland





**Alessandra Solari**

Unit of Neuroepidemiology  
Foundation IRCCS Neurological Institute C. Besta  
Milan, Italy

**Yasmin Villa**

Department of Neurorehabilitation  
Valens Clinic Rehabilitation Center  
Valens, Switzerland

**Andrea Weise**

Department of Neurorehabilitation  
Valens Clinic Rehabilitation Center  
Valens, Switzerland

Programme

# Programme

Thursday, 6 October 2016

- 8.45**      **Opening and introduction to the course**  
G. Comi (Italy) - P. Feys (Belgium) -  
J. Kesselring (Switzerland)
- 9.00**      **Introduction to MS rehabilitation center of Valens**  
J. Kesselring (Switzerland)

## Session I      Biological basis of neurorehabilitation

**Chairs:** P. Feys (Belgium) - J. Kesselring (Switzerland)

- 9.15 L1: From neurorehabilitation to neuroplasticity and viceversa**  
G. Comi (Italy)
- 9.45 L2: Molecular and physical benefits of exercise in multiple sclerosis**  
J. Kesselring (Switzerland)
- 10.15**      **Coffee break**

## Session II      The assessment of functioning and patient-oriented rehabilitation programme

**Chairs:** P. Feys (Belgium) - J. Kesselring (Switzerland)

### Motor functioning and balance

- 10.45 S1: Assessments by MS**  
C. Meier (Switzerland)
- 11.05 S2: Gait and Walking Assessments by MS**  
Y. Villa (Switzerland)
- 11.25 S3: Technical aids by MS**  
C. Meier (Switzerland)
- 11.45 L3: Upper and lower limbs motor rehabilitation aims and approaches**  
P. Feys (Belgium)
- 12.15 L4: Acquatic therapy**  
U. Gamper (Switzerland)
- 12.45**      **Lunch**

**Legend:** L : Lecture; S : Snapshot; CC: Clinical Cases;

## Session III

### The assessment of functioning and patient-oriented rehabilitation programme

**Chairs:** P. Feys (Belgium) - J. Kesselring (Switzerland)

#### Cognitive functioning

- 14.00 L5: Cognitive impairment profile and mood disturbances**  
M.P. Amato (Italy)
- 14.30 L6: Neuropsychological tests batteries**  
D. Langdon (UK)
- 15.00 L7: Cognitive rehabilitation aims and approaches**  
P. Hämäläinen (Finland)
- 15.30 CC1: Clinical cases and practical exercises with cognitive rehabilitation platforms**  
P. Hämäläinen (Finland)  
D. Langdon (UK)
- 16.20 Coffee break**
- 16.40 Visit to Valens Klinik premises**
- 17.30 End of the first day**

Friday, 7 October 2016

**Session IV**

The assessment of functioning and patient-oriented rehabilitation programme

**Chairs:** P. Feys (Belgium) - J. Kesselring (Switzerland)

**9.00 L8: Role of occupational therapy in MS**

J. Ebert (Switzerland)

**9.30 L9: Fatigue management**

A. Weise (Switzerland)

**Session V**

The assessment of functioning and patient-oriented rehabilitation programme

**Chairs:** P. Feys (Belgium) - J. Kesselring (Switzerland)

**10.00 L10: Pelvic rehabilitation in MS**

R. Althof (Switzerland)

**10.30 L11: Dysphagia and swallowing rehabilitation**

J. Ebert (Switzerland)

**11.00 Coffee break**

**Session VI**

Shared decision in rehabilitation

**Chairs:** P. Feys (Belgium) - J. Kesselring (Switzerland)

**11.30 L12: Psychosomatic medicine and social factors**

V. Kesselring (Switzerland)

**12.00 L13: Patient reported outcomes (PROs)**

A. Solari (Italy)

**12.30 L14: ICF core set**

A. Weise (Switzerland)

**13.00 Lunch**

**Session VII** Advanced neurorehabilitation

**Chairs:** P. Feys (Belgium) - J. Kesselring (Switzerland)

**14.00 S4: Sport therapy**

J. Bansi (Switzerland)

**14.20 S5: Hippotherapy**

A. Artuso (Italy)

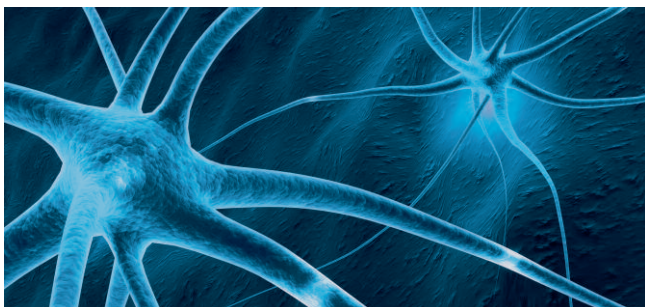
**14.40 CC2: Clinical cases about advanced neurorehabilitation, including an overview about how to plan an integrated rehabilitation programme**

J. Kesselring (Switzerland)

J. Ebert (Switzerland)

**15.40 Final discussion and meeting wrap up**

**16.30 End of the course**



# General information

## Venue

This live educational course will take place at:

### **Multiple Klinik Valens Rehabilitationszentrum**

CH-7317 Valens, Switzerland

Phone: +41 81 303 11 11

Fax: +41 81 303 11 00

E-mail: [info@klinik-valens.ch](mailto:info@klinik-valens.ch)

## Language

The official language of this live educational course will be English.

## CME Provider

EXCEMED - Excellence in Medical Education

Programme and Relations Manager: Giulia Anastasia

T +39 06 420413 315 - F +39 06 420413 677

[giulia.anastasia@excemed.org](mailto:giulia.anastasia@excemed.org)

Medical Advisor: Doriana Landi

[doriana.landi@gmail.com](mailto:doriana.landi@gmail.com)

## Registration

- The registration fee is **€ 380,00**
- Special fee dedicated to RIMS members is **€ 350,00**  
(further information on RIMS website)

The registration fee includes:

- Scientific sessions
- Coffee breaks and luncheons
- Dinner on 6 October 2016
- Educational materials
- Certificate of attendance

*Places available are limited and confirmation will be given on a first-come, first-served basis.*

**For registration and accommodation please contact:**

Meridiano Congress International

Project Manager: Giorgia Di Egidio

T +39 06 88 595 232 - F +39 06 88595 234

giorgia.diegidio@meridiano.it

Visit

[www.excemed.org](http://www.excemed.org)





# Keep in touch



[https://twitter.com/EXCEMED\\_Neuro](https://twitter.com/EXCEMED_Neuro)



[www.facebook.com/excemed/](http://www.facebook.com/excemed/)



[www.linkedin.com/company/excemed---excellence-in-medical-education](http://www.linkedin.com/company/excemed---excellence-in-medical-education)



# Take a look at the new website

[www.excemed.org](http://www.excemed.org)

ONCOLOGY NEUROLOGY CARDIOMETABOLIC REPRODUCTIVE MEDICINE  
IMMUNOLOGY ENDOCRINOLOGY AND METABOLISM  SPECIALTY AREA

LIVE EVENTS LEARNING RESOURCES ONLINE COURSES NEWS



HIGH IMPACT  
MEDICAL EDUCATION

AN EXCLUSIVE FOCUS  
ON CME


SUBMIT A PROPOSAL

Our core mission is to help physicians achieve the best possible outcomes for patients. Our name, EXCEMED, symbolizes a drive for excellence and reflects a passion for delivering the absolute best in CME. With four decades of achievement behind us and access to the world's premiere medical experts, better outcomes for patients start here. [About EXCEMED.](#)

- Six specialty areas, including neurology
- Exclusive best practice communities in multiple sclerosis: MS Alumni and MS Nurse Club
- Accessible and accredited e-learning packages
- A world-class repository of CME knowledge and learning materials
- Monthly updates about our events and resources in neurology
- Register with us online and access it all – free

**Better outcomes for patients start here.**

With over 40 years in the field, EXCEMED has been delivering CME-accredited programmes longer than any other provider in Europe, and now offers CME worldwide.



All EXCEMED programmes are organized solely to promote the exchange and dissemination of scientific and medical information. No forms of promotional activities are permitted. There may be presentations discussing investigational uses of various products. These views are the responsibility of the named speakers, and do not represent an endorsement or recommendation on the part of EXCEMED. This programme is made possible thanks to an educational grant received from Merck KGaA, Darmstadt, Germany

Improving the patient's life through medical education  
[www.excemed.org](http://www.excemed.org)



EXCEMED - Excellence in Medical Education

**Headquarters**

14, Rue du Rhône - 1204 Geneva, Switzerland

**Representative Office**

Salita di San Nicola da Tolentino 1/b - 00187 Rome, Italy

T +39 06 420413 1 - F +39 06 420413 677

